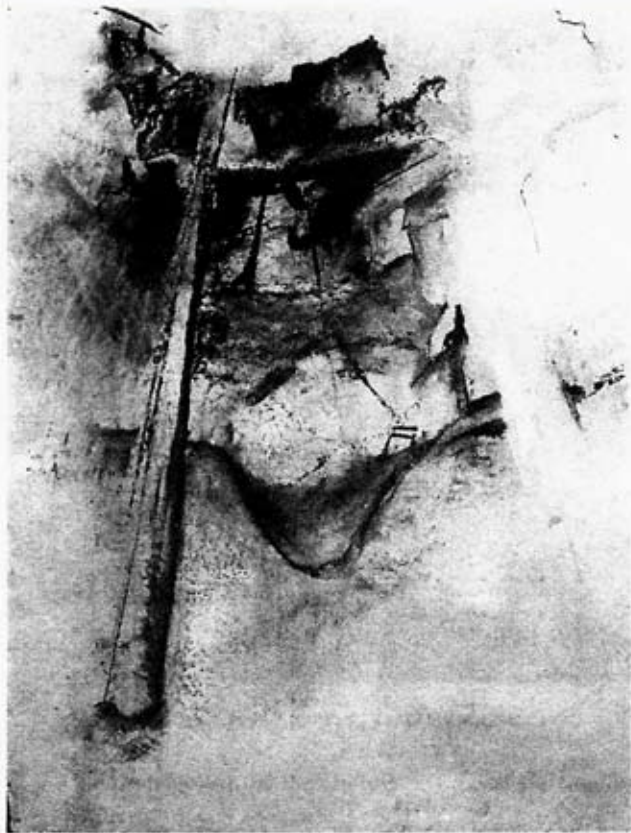


The Ottawa Art Gallery  
La Galerie d'art d'Ottawa



DONNA EICHEL, *INNER SPACES III*, 1995

DONNA EICHEL. For Donna Eichel, certain formal structures exist only for that instant when the gaze seizes them. She seeks to make of the urban site a familiar form. For her, exterior elements reflect interior realities. She regularly visits abandoned buildings, searching for the key to an introspective exploration. There is an urgency, not to confirm her existence, but to situate

elsewhere, outside her own body, the tension which exists at the heart of the self.

Her drawings show us architectural constructions suspended in anticipation of progression, of unfolding, of the pivotal moment between the capsizing of existence and its downfall. Her structures contains their own death. Failure of order, quest for truth amid the shock of disaster. Perhaps a reflection of the disengagement of a society whose structures are collapsing. Eichel recognizes in urban landscapes the laws which govern existence.

Here, we do not inhabit a place, we observe it, maintaining an appropriate distance in the face of disorder. At best, we keep our gaze fixed on the thing as long as our vertigo suggests that it will crumble before our very eyes.

# Drawings & *dérivés*

# Dessins *et dérives*